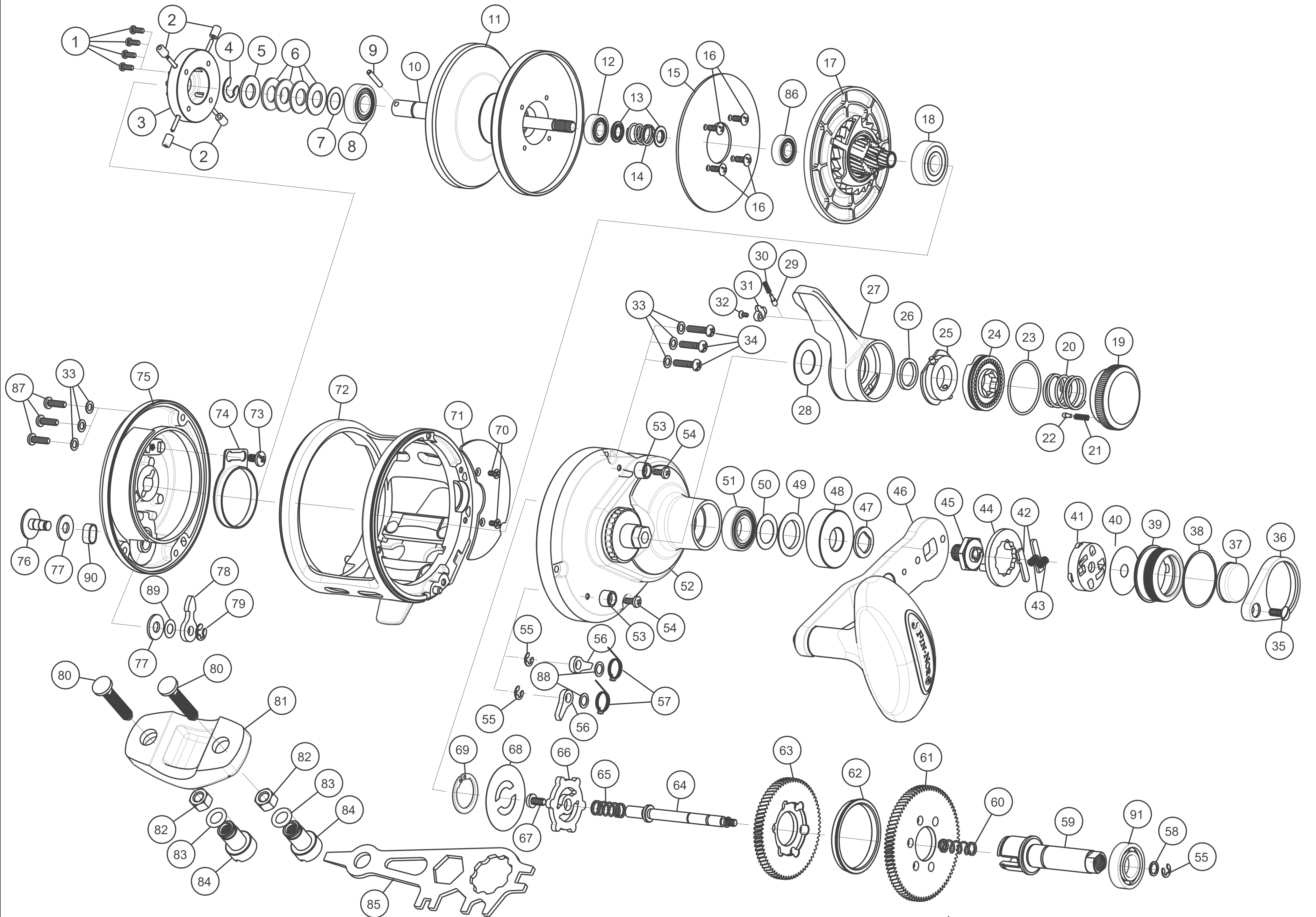


LTL16II/20II/30II DIAGRAM



FinNor Die Cast Lever Drag , Two Speed

Key No.	Description	Q'ty	Part No.			Key No.	Description	Q'ty	Part No.		
			LTL16II	LTL20II	LTL30II				LTL16II	LTL20II	LTL30II
1	Screw	4	LF057-01	⊖	⊖	47	Spacer	1	JM160-01	⊖	⊖
2	Brake Shoe	4	RF044-01	⊖	⊖	48	Handle Washer	1	JM054-01	⊖	⊖
3	Bait Click Ratchet Assembly	1	JM329-01	⊖	⊖	49	Adjustment Washer	1	DF035-03	⊖	⊖
4	E-Clip	1	DF092-01	⊖	⊖	50	Rubber Seal	1	CM172-01	⊖	⊖
5	Spacer	1	DF081-02	⊖	⊖	51	Ball Bearing	1	CF017-02	⊖	⊖
6	Drag Spring	4	JF046-01	⊖	⊖	52	Gear Side Cover Assembly	1	JM324-04	KM324-05	KM324-06
7	Washer	1	CF121-01	⊖	⊖	53	Locating Collar	2	JM118-01	⊖	⊖
8	Ball Bearing	1	KF017-02	⊖	⊖	54	Screw	2	NF125-01	⊖	⊖
9	Spool Shaft Pin	1	JM093-01	⊖	⊖	55	E-Clip	3	NX092-01	⊖	⊖
10	Spool Shaft	1	JM015-01	KM015-01	LM015-01	56	Anti Reverse Pawl	2	DF063-02	⊖	⊖
11	Spool	1	JM021-01	KM021-01	LM021-01	57	Spring	2	JM096-01	⊖	⊖
12	Ball Bearing	1	CF117-01	⊖	⊖	58	Spacer	1	AM081-01	⊖	⊖
13	Collar	2	BF094-01	⊖	⊖	59	Crank Shaft	1	JM008-01	⊖	⊖
14	Spring	1	CF040-01	⊖	⊖	60	Coil Spring - Upper	1	AM070-01	⊖	⊖
15	Drag Disc	1	JM059-01	⊖	⊖	61	Drive Gear - High	1	JM012-01	⊖	⊖
16	Screw	4	QW053-07	⊖	⊖	62	Spacer	1	LF160-02	⊖	⊖
17	Drag Plate Assembly	1	KM348-01	⊖	⊖	63	Drive Gear - Low	1	KM012-01	⊖	⊖
18	Ball Bearing	1	VF017-02	⊖	⊖	64	Shift Shaft	1	AM146-01	⊖	⊖
19	Pre Set Knob	1	JM029-01	⊖	⊖	65	Coil Spring - Lower	1	VF070-01	⊖	⊖
20	Spring	1	JM040-01	⊖	⊖	66	Link	1	LF036-02	⊖	⊖
21	Click Spring	1	JM114-01	⊖	⊖	67	Screw	1	MF053-01	⊖	⊖
22	Click Pawl	1	JM098-01	⊖	⊖	68	Dust Cover - A	1	AM038-01	⊖	⊖
23	Rubber Ring	1	JM105-01	⊖	⊖	69	External Ring	1	LF075-01	⊖	⊖
24	Drag Cam A	1	JM028-01	⊖	⊖	70	Screw	2	CF107-01	⊖	⊖
25	Drag Cam B Assembly	1	JM353-01	⊖	⊖	71	Gear Cover	1	JM143-01	⊖	⊖
26	Bushing	1	DF017-02	⊖	⊖	72	Frame Assembly	1	JM301-01	KM301-01	LM301-01
27	Drag Lever	1	JM055-01	⊖	⊖	73	Screw	1	RF053-01	⊖	⊖
28	Drag Lever Washer	1	BM038-01	⊖	⊖	74	Click Spring	1	RF022-02	⊖	⊖
29	Click Pawl	1	CM098-01	⊖	⊖	75	Plam Side Cover Assembly	1	JM323-01	⊖	⊖
30	Click Spring	1	KM114-01	⊖	⊖	76	Bait Click Lever	1	RF109-02	⊖	⊖
31	Cover	1	CM161-01	⊖	⊖	77	Washer	1	RF081-01	⊖	⊖
32	Screw	1	DW107-01	⊖	⊖	78	Bait Click Pawl	1	JM109-01	⊖	⊖
33	Washer	6	JM035-01	⊖	⊖	79	Retainer	1	RF020-01	⊖	⊖
34	Screw	3	RF057-01	⊖	⊖	80	Screw	2	RF125-01	⊖	⊖
35	Handle Nut Screw	1	JM076-01	⊖	⊖	81	Rod Clamp	1	RF154-01	⊖	⊖
36	Shift Knob Holder	1	AM159-02	⊖	⊖	82	Nut	2	JF003-01	⊖	⊖
37	Shift Button	1	AM062-02	⊖	⊖	83	O-Ring	2	RF105-01	⊖	⊖
38	Washer	1	AM035-01	⊖	⊖	84	Nut	2	RF161-01	⊖	⊖
39	Shift Knob	1	AM158-02	⊖	⊖	85	Wrench Driver	1	CM113-01	⊖	⊖
40	Dust Cover - B	1	BM035-01	⊖	⊖	86	Ball Bearing	1	CF117-02	⊖	⊖
41	Trip Holder	1	BM159-01	⊖	⊖	87	Screw	3	RF057-02	⊖	⊖
42	Plate	2	JM104-01	⊖	⊖	88	Mylar Washer	2	BAA076-01	⊖	⊖
43	Coil Spring	2	JM070-01	⊖	⊖	89	Adjustment Washer	1	JM032-01	⊖	⊖
44	Handle Nut Retainer	1	AM034-01	⊖	⊖	90	Bait Click Lever Bushing	1	JM088-01	⊖	⊖
45	Handle Nut	1	AM003-01	⊖	⊖	91	Ball Bearing	1	JM017-01	⊖	⊖
46	Handle Arm Assembly	1	JM318-02	⊖	⊖						

Rev.1	Add #86 for Ball Bearing spec changes Change #8&12	Date 08/13/14
Rev.2	Add #87 , Change #34 q'ty 6 to 3 and part number -02 to -01 Change #14 part number KM040 to CF040	11/21/14
Rev.3	Change #46 -01 to -02	12/10/14
Rev.4	Add #88	12/16/14
Rev.5	Change#42,#43	03/02/15
Rev.6	Change#59,AM008 to JM008,DF035-04 to DF035-03	06/08/15
Rev.7	Add #89,	12/22/15
Rev.8	Add 90#;	10/18/2016
Rev.J	43# Q'ty 2 to 1, add 78#; F1189	11/1/2018